

LANDSCAPE SPECIFICATIONS

A. MATERIALS

1. PLANTS SHALL BE NURSERY GROWN IN ACCORDANCE WITH GOOD HORTICULTURAL PRACTICE...

THEY SHALL BE SOUND, HEALTHY AND VIGOROUS, WELL BRANCHED AND DENSELY FOLIATED WHEN IN LEAF...

PLANTS SHALL NOT BE PRUNED BEFORE DELIVERY. TREES WITH A DAMAGED OR CROOKED LEADER OR MULTIPLE LEADERS...

NO CHANGE IN QUANTITY, SIZE, KIND OR QUALITY OF PLANT SPECIFIED WILL BE PERMITTED WITHOUT APPROVAL...

2. TOPSOIL SHALL BE FERTILE, FRIABLE AND TYPICAL OF THE LOCALITY. IT SHALL BE FREE OF STONES, LUMPS...

3. PLANTING SOIL (BACKFILL MIX) SHALL BE FIVE-PARTS TOPSOIL AND ONE-PART WET LOOSE PEAT MOSS.

4. STAKING MATERIALS: GUY WIRE SHALL BE PLIABLE #12 GAUGE GALVANIZED TWISTED TWO-STRAND WIRE...

5. WRAPPING MATERIAL SHALL BE A STANDARD MANUFACTURED TREE WRAPPING PAPER WITH CRINKLED SURFACE...

B. APPLICABLE SPECIFICATIONS AND STANDARDS

1. "STANDARD PLANT NAMES," LATEST EDITION AMERICAN JOINT COMMITTEE ON HORTICULTURE NOMENCLATURE.

2. "AMERICAN STANDARD OF NURSERY STOCK," LATEST EDITION, AMERICAN ASSOCIATION OF NURSEYMEN.

C. DIGGING AND HANDLING OF PLANT MATERIALS

1. IMMEDIATELY BEFORE DIGGING, SPRAY ALL EVERGREEN OR DECIDUOUS PLANT MATERIAL IN FULL LEAF WITH ANTI-DESICCANT...

2. DIG BALLED AND BURLAPPED (B&B) PLANTS WITH FIRM NATURAL BALLS OF EARTH OF A DIAMETER NOT LESS THAN THAT RECOMMENDED...

D. EXCAVATING OF PLANTING AREA

1. STAKE OUT ON THE GROUND LOCATIONS FOR PLANTS AND OUTLINES OF AREA TO BE PLANTED, AND OBTAIN APPROVAL OF THE LANDSCAPE ARCHITECT...

2. SET PLANTING PLUMB AND BRACE RIGIDLY IN POSITION UNTIL THE PLANTING SOIL HAS BEEN STAMPED SOLIDLY AROUND THE BALL AND ROOTS...

3. PROTECT PLANTS AT ALL TIMES FROM SUN OR DRYING WINDS. PLANTS THAT CAN NOT BE PLANTED IMMEDIATELY ON DELIVERY SHALL BE KEPT IN THE SHADE...

4. PLANTS SHALL NOT BE BOUND WITH WIRE OR ROPE AT ANY TIME SO AS TO DAMAGE THE BARK OR BREAK BRANCHES. PLANTS SHALL BE LIFTED AND HANDLED FROM THE BOTTOM OF THE BALL ONLY.

5. MULCH ALL PITS AND BEDS WITH A TWO INCH LAYER OF BARK. MULCH IMMEDIATELY AFTER PLANTING AND WORK INTO THE TOP THREE INCHES OF THE PLANTING SOIL.

6. STAKING, WRAPPING AND PRUNING

1. STAKING SHALL BE COMPLETED IMMEDIATELY AFTER PLANTING. PLANTS SHALL STAND PLUMB AFTER STAKING. STAKES AND GUY WIRE SHALL BE REMOVED AT THE END OF THE GUARANTEE PERIOD...

2. WRAP DECIDUOUS TREE TRUNKS STARTING AT THE BASE OF THE TREE UP TO THE SECOND BRANCH. REMOVE WRAPPING AT THE END OF THE GUARANTEE PERIOD.

3. PRUNE PLANTS AT THE TIME OF PLANTING AS DIRECTED BY THE LANDSCAPE ARCHITECT TO REMOVE 1/5 OR 1/3 OF THE FOLIAGE, REMOVE ALL DEAD WOOD, SUCKERS OR BROKEN BRANCHES...

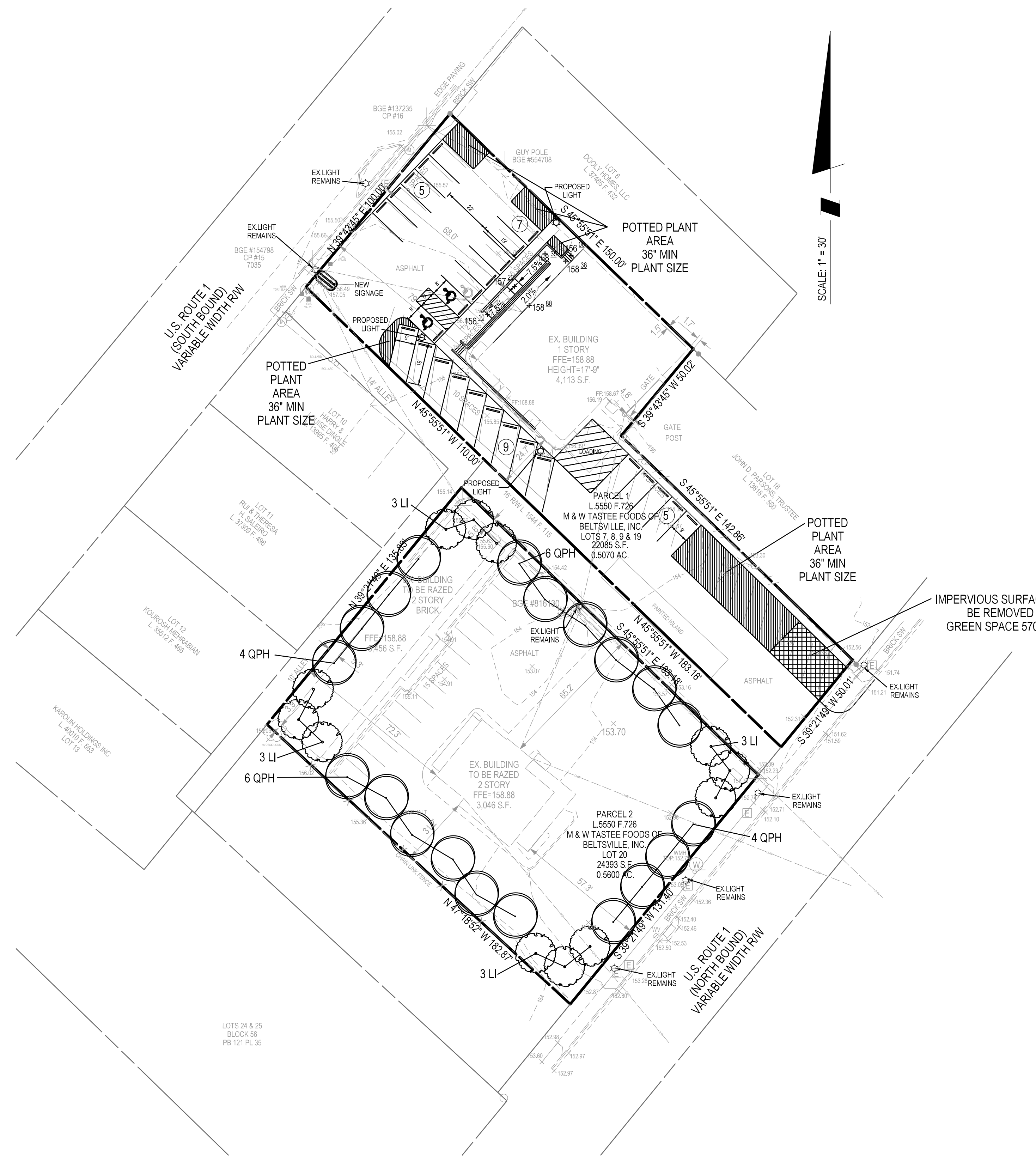
G. GUARANTEE

1. ALL PLANT MATERIAL SHALL BE GUARANTEED BY THE CONTRACTOR TO BE IN A HEALTHY AND VIGOROUS CONDITION AT THE BEGINNING OF THE SECOND GROWING SEASON FOLLOWING ACCEPTANCE BY THE LANDSCAPE ARCHITECT.

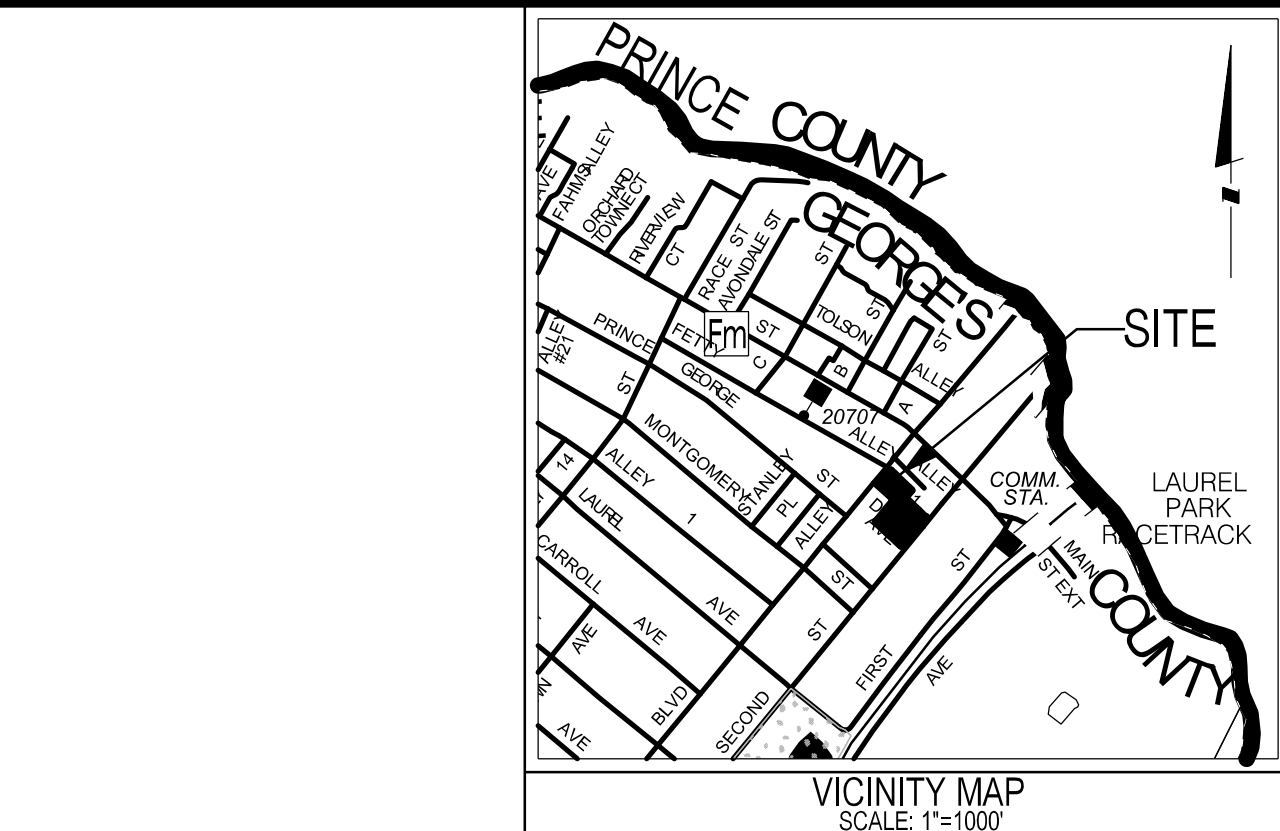
2. INDIVIDUAL TREES AND GROUPS OF TREES SHALL BE PROTECTED BY FENCING AROUND A PERIMETER OF THEIR BRANCHES USING STANDARD 48" HIGH SNOW FENCE SECURELY MOUNTED TO STANDARD STEEL POSTS...

3. FENCING SHALL BE INSTALLED PRIOR TO THE START OF ANY CONSTRUCTION ACTIVITY.

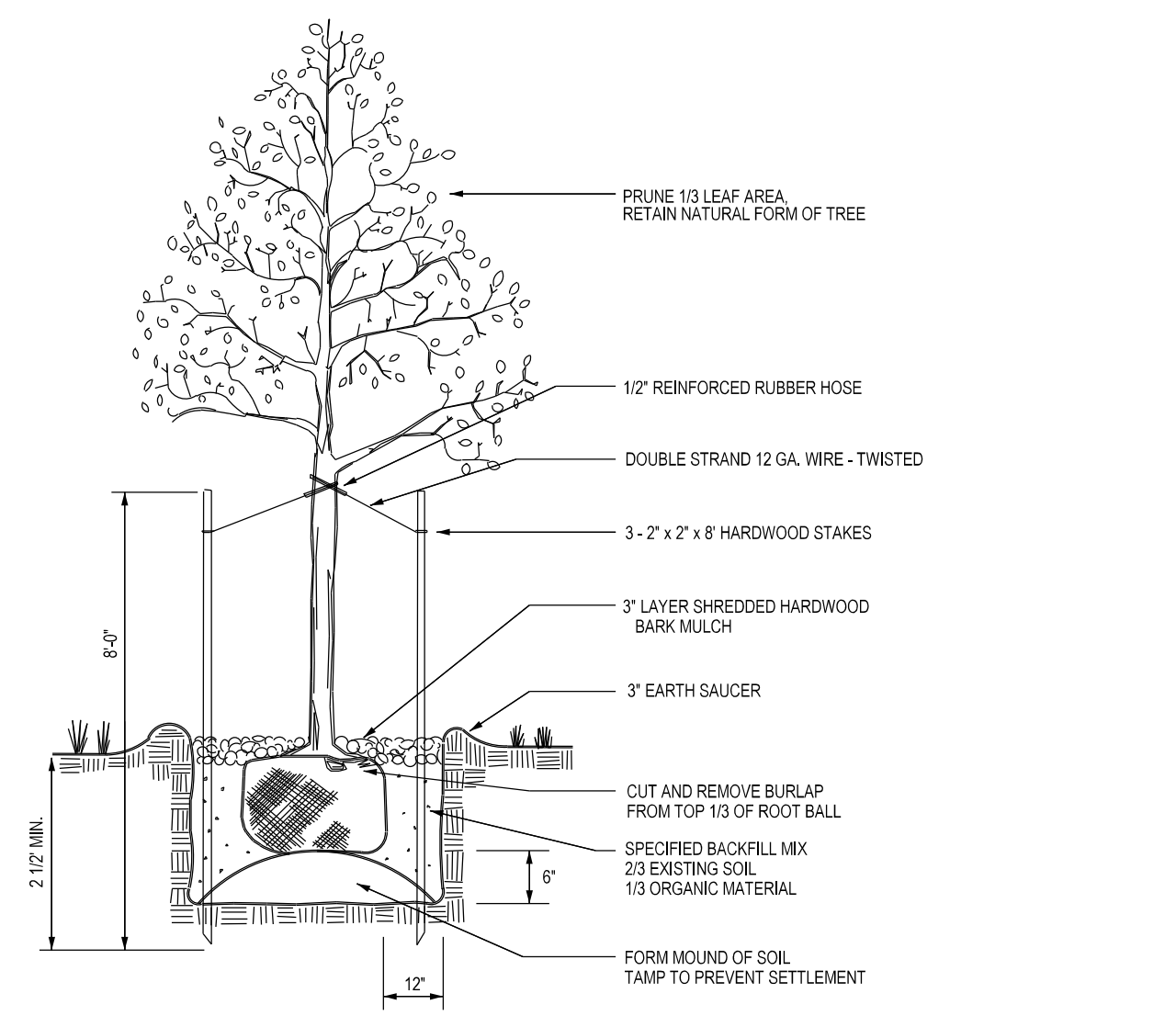
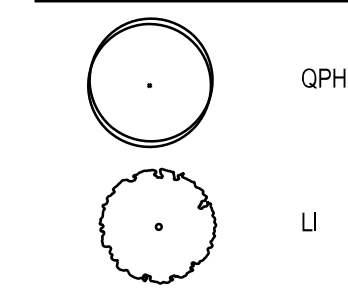
The original of this drawing document was prepared by Soltesz, Inc. (SOLTESZ). If this document was not obtained directly from SOLTESZ and/or it was transmitted electronically, SOLTESZ cannot guarantee that unauthorized changes and/or alterations were not made by others.



GREEN SPACE CALCULATIONS: TOTAL ACREAGE: 0.51 AC (22,216 SF) MINIMUM GREEN SPACE REQ. 10% OR (2,222 SF) GREEN SPACE PROPOSED: 10% OR 2,251 SF (75% OF REQUIREMENT WILL BE MET BY POTTED PLANTS)



LEGEND



1 TREE PLANTING DETAIL NOT TO SCALE

Table with columns: QTY, KEY, BOTANICAL NAME, COMMON NAME, SIZE, COND. Lists 20 canopy trees and 12 ornamental trees.

City of Laurel Planning Commission approval form with fields for Date, Chairman, Secretary, and DPW/ECDD signatures.



SOLTESZ, LLC logo and contact information for the Lanham Office.

Revisions table with columns for NO., DATE, REVISIONS, BY, DATE.

MISS UTILITY NOTE: INFORMATION CONCERNING EXISTING UNDERGROUND UTILITIES WAS OBTAINED FROM AVAILABLE RECORDS...

OWNER/DEVELOPER/APPLICANT: SH REALTY HOLDINGS LLC, 515 N. FLAGLER DRIVE, SUITE 1700, WEST PALM BEACH, FL 33401

Map and Grid information table with columns for TAX MAP, ZONING CATEGORY, WSSC 200' SHEET, SITE DATUM.



LANDSCAPE PLAN title block containing project name (PURE HANA SYNERGY MEDICAL DISPENSARY), address (118 WASHINGTON BOULEVARD), and sheet information (SHEET 1 OF 1).