



THE AMERICAN RESCUE PLAN ACT OF 2021 (ARPA)

THE CITY OF LAUREL'S PLAN

AGENDA



- **ARPA Overview**



- **Timeline**



- **Phases and Stages**



- **ARPA Committee**



- **Next Steps**

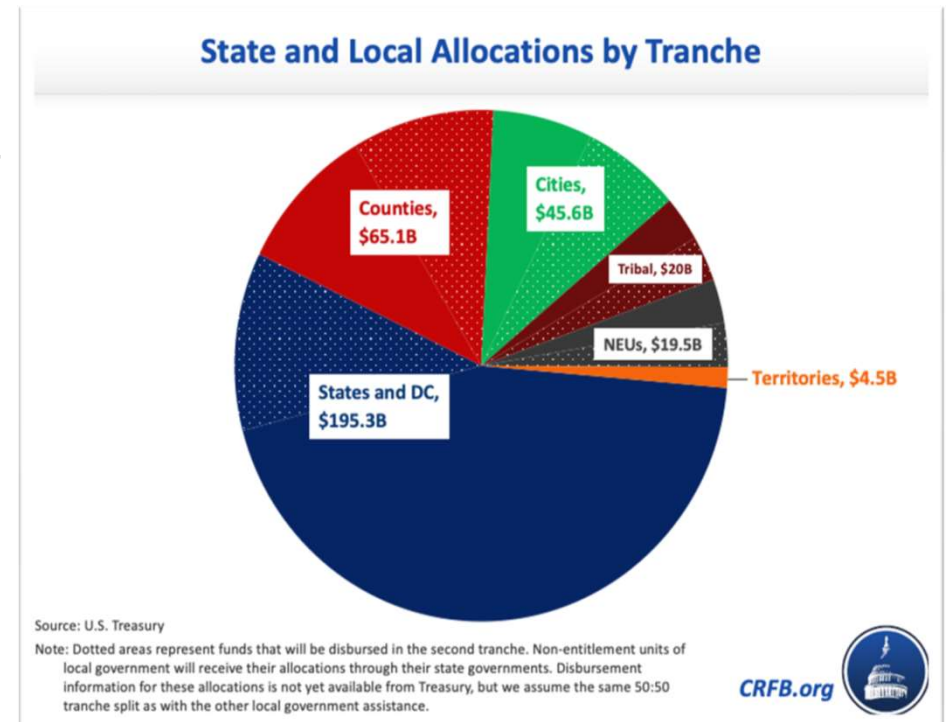
ARPA OVERVIEW

- \$350 Billion
- U.S. Treasury's Objectives
 - Support urgent COVID-19 response efforts to continue to decrease spread of the virus and bring pandemic under control;
 - Replace lost public sector revenue to strengthen support for vital public services and help retain jobs;
 - Support immediate economic stabilization for households and businesses; and,
 - Address systemic public health and economic challenges that have contributed to the inequal impact of the pandemic on certain populations.①

①FACT SHEET: The Coronavirus State and Local Fiscal Recovery Funds Will Deliver \$350 Billion for State, Local, Territorial, and Tribal Governments to Respond to the COVID-19 Emergency and Bring Back Jobs. May 10, 2021.

NON-ENTITLEMENT GOVERNMENTS

- \$19.53 Billion to Small Cities
- Non-entitlement Units (NEUs) of Local Government
- Treasury's Interim Final Rule (IFR)
- Partnership with State of Maryland





ELIGIBLE USES PER IFR

Revenue Loss

Laurel's Objective: To capture and remediate the City's revenue loss due to COVID-19 to ensure quality services are continued for citizens.



Premium Pay

Laurel's Objective: To provide premium pay for fully vaccinated, eligible essential and front-line staff that delivered City services during COVID-19.



Public Health

Laurel's Objective: To provide and enhance public health resources and needs through programs or services that will address disparities.



ELIGIBLE USES

Economic Impacts

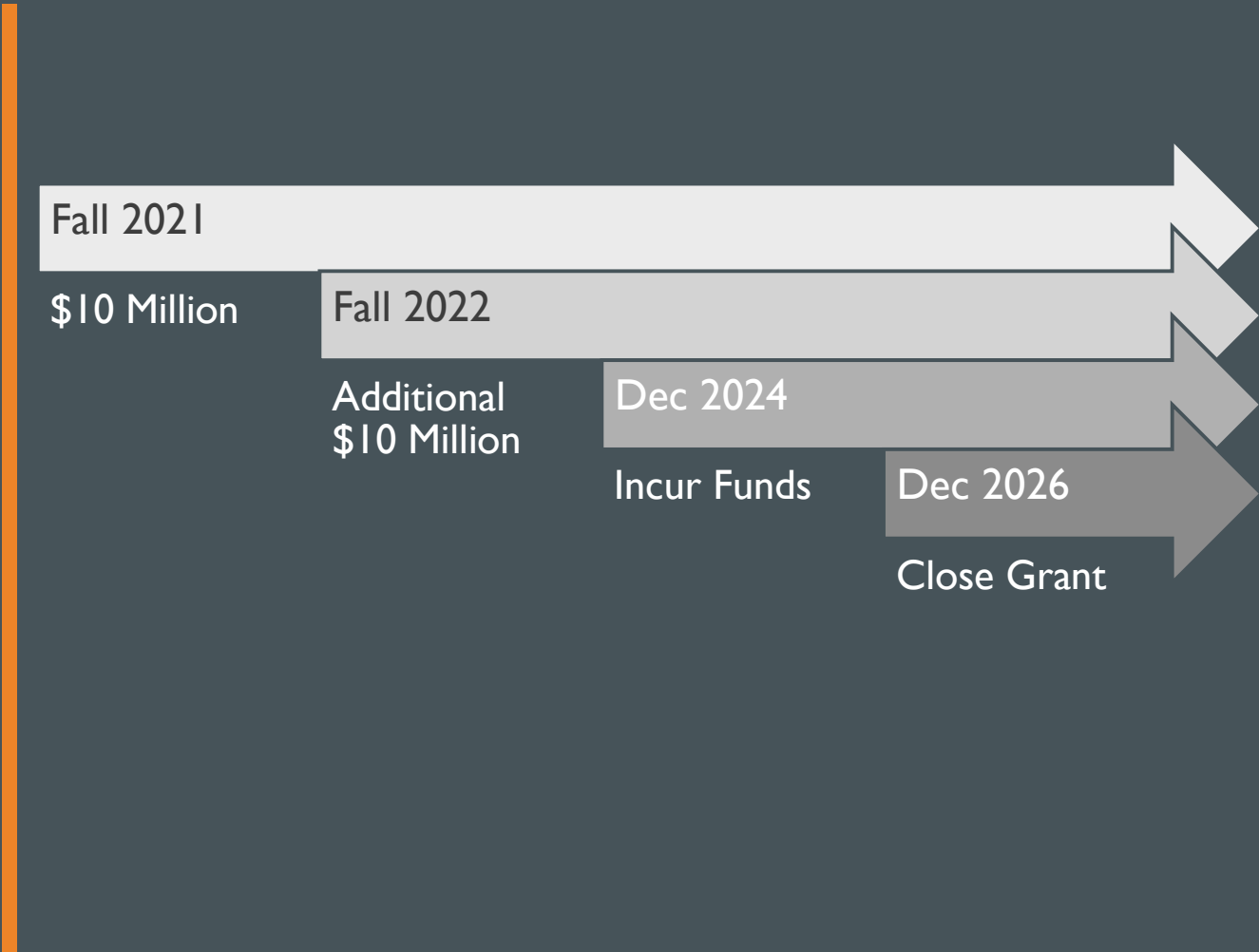
Laurel's Objective: To provide financial relief to those affected by COVID-19 through partnership with businesses, organizations, and non-profits.



Infrastructure

Laurel's Objective: To expand and enhance the broadband, qualified infrastructure, and the possibility to partner with others.

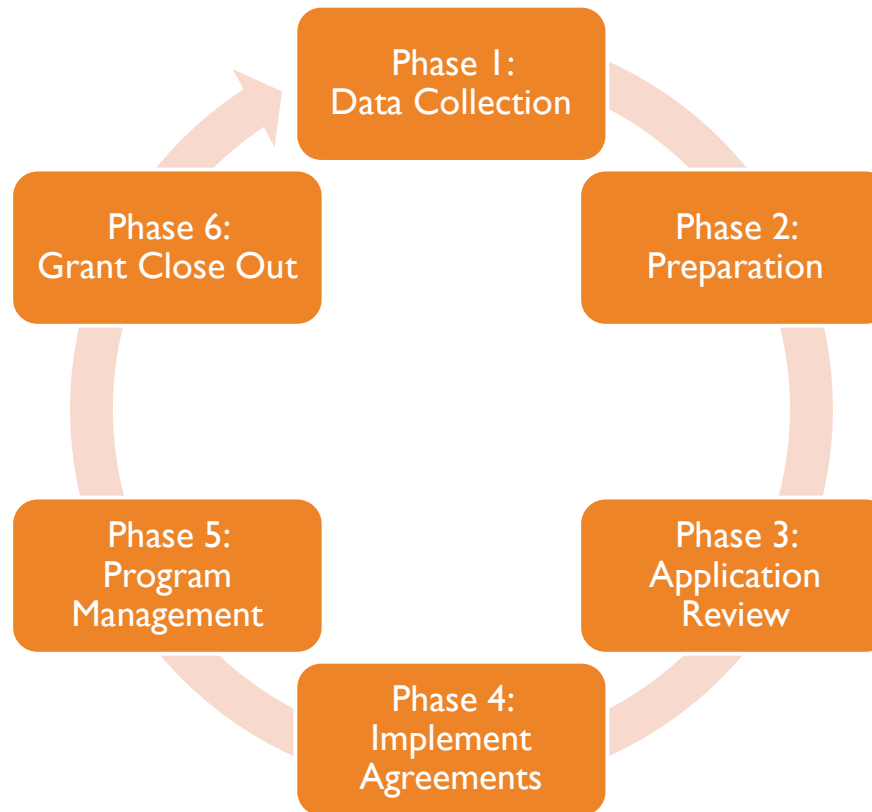
TIMELINE



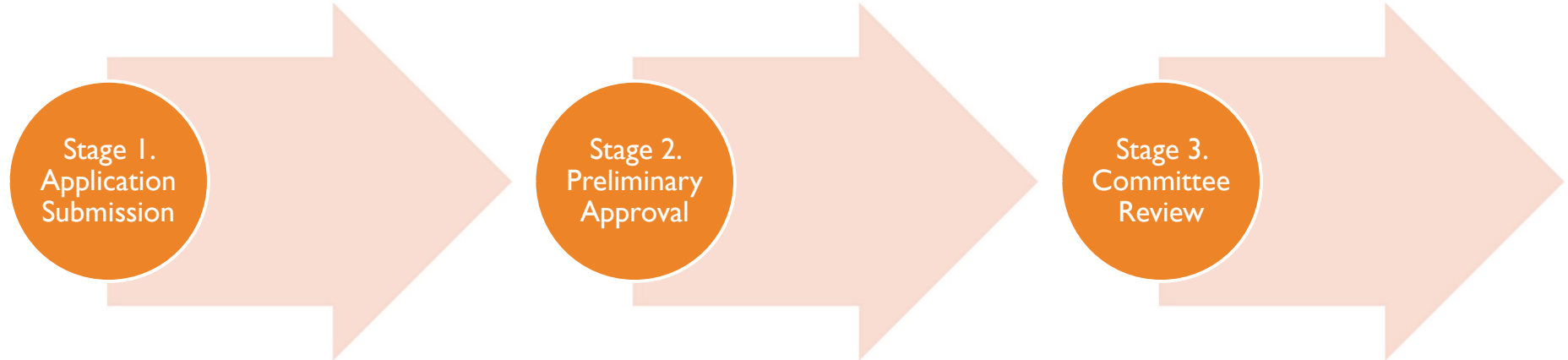
PHASES AND STAGES



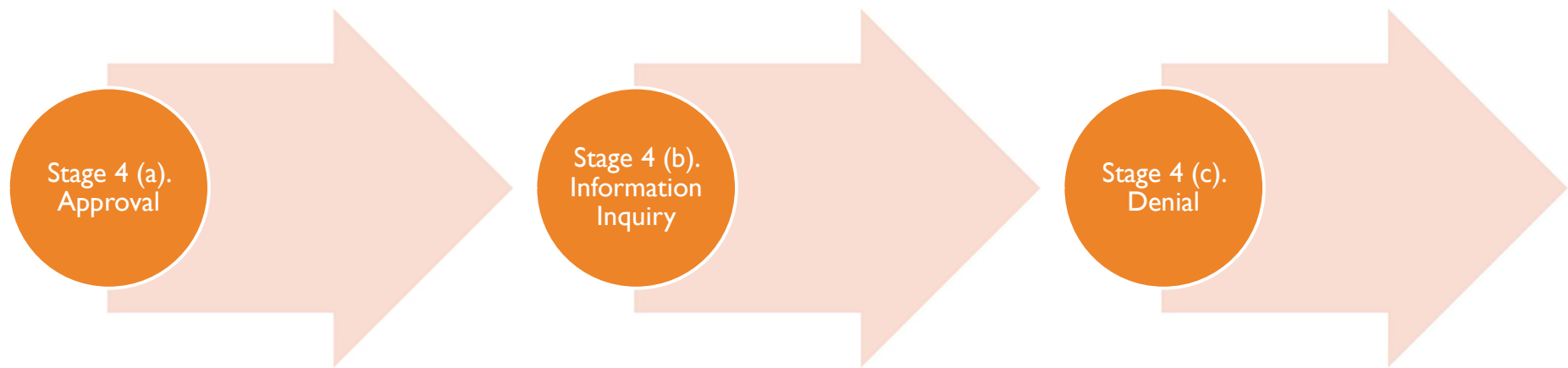
PHASES FOR ARPA



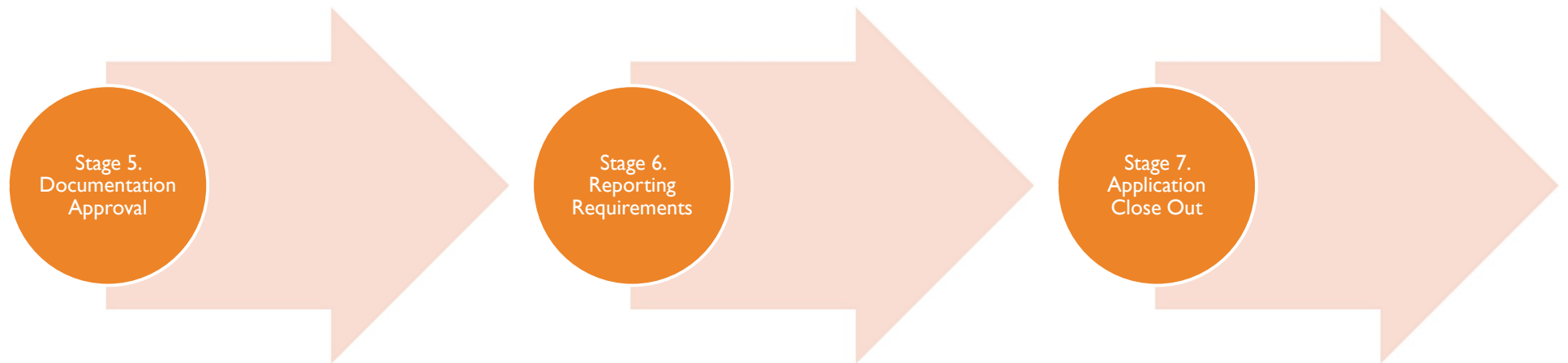
APPLICATION PROCESS STAGES



APPLICATION PROCESS STAGES (CONTINUED)



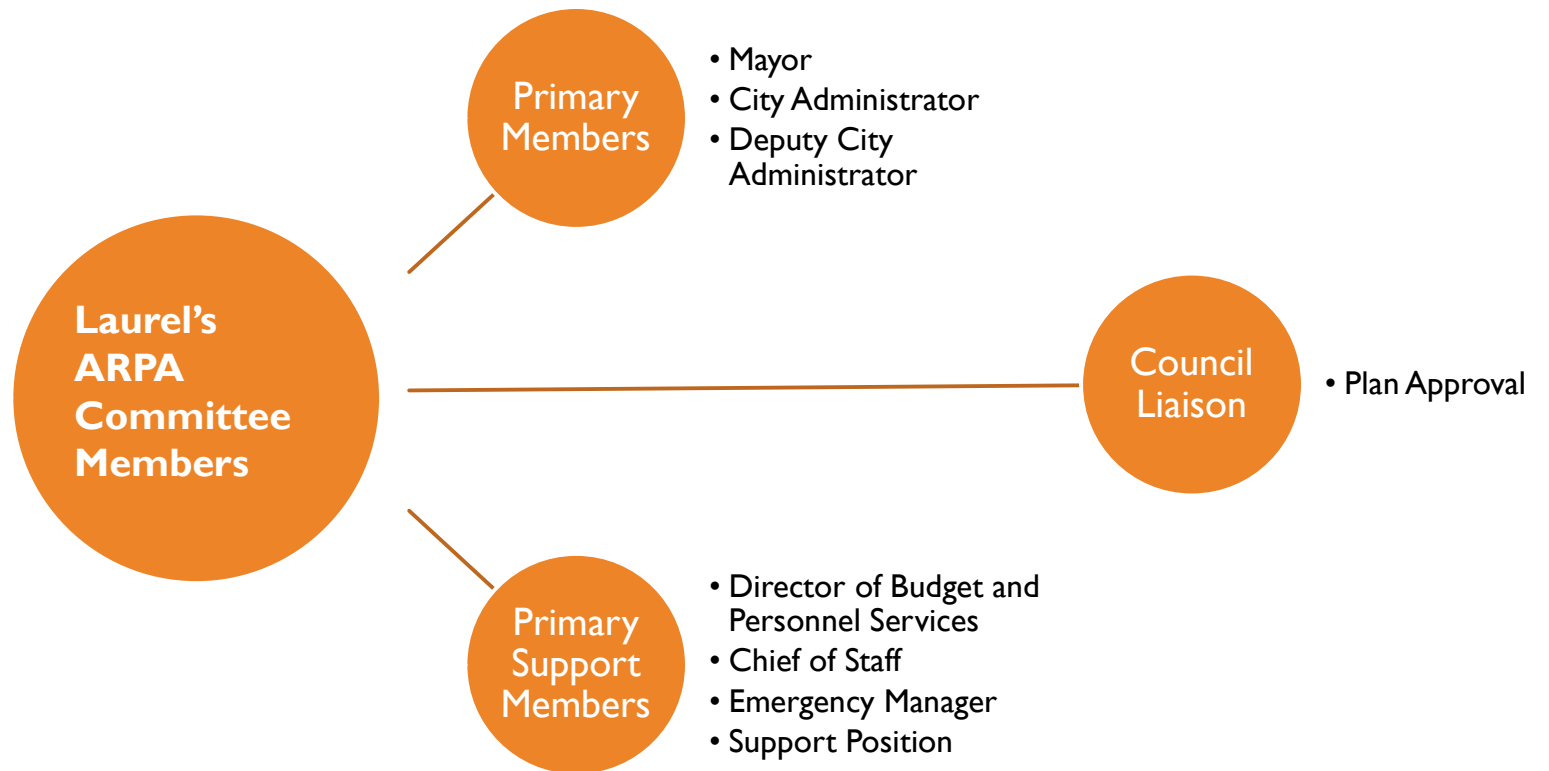
APPLICATION PROCESS STAGES (CONTINUED)



ARPA COMMITTEE



LAUREL'S ARPA COMMITTEE



NEXT STEPS



NEXT STEPS

1
**CALCULATE
REVENUE LOSS**

Continue to calculate
revenue loss with
departments

2
**FINALIZE
PROCESSES**

Evaluate and enhance
processes for project
and documentation
management

3
**STATE
COORDINATION**

Coordinate with State
to receive funds

4
**APPLICATION
PROCESS**

**Coordinate with
Partners for
projects/programs**



THANK YOU